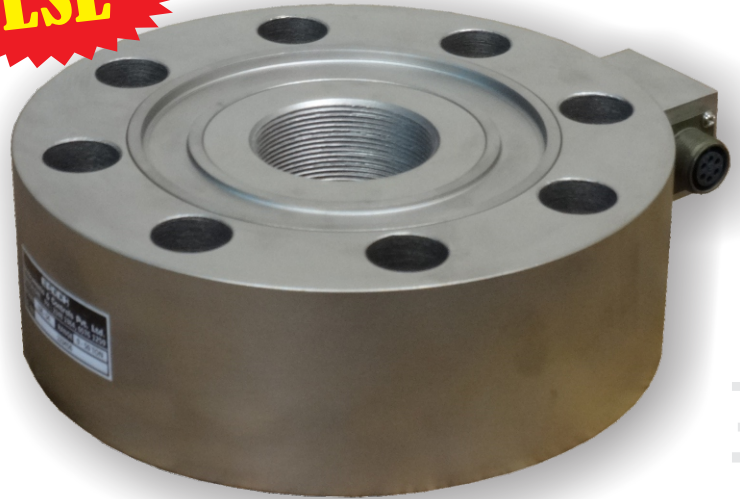
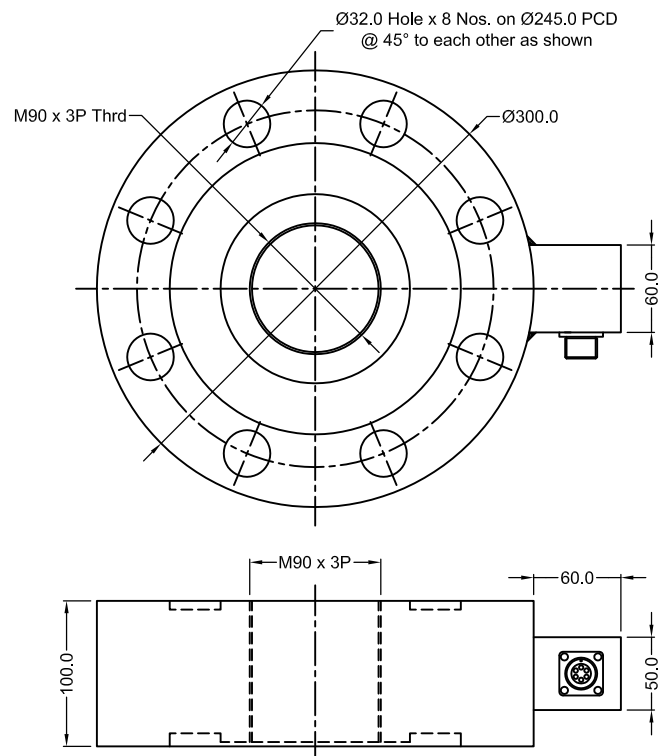


**LSE****FEATURES :**

- \* *Good Linearity*
- \* *Good Repeatability*
- \* *Easy to Install*
- \* *Temperature Compensated*
- \* *Good Reliability*
- \* *Wide Range*

**SPECIFICATIONS :**

Rated Capacity	: 120, 150, 200 Tonne.
Excitation Voltage	: 10 - 12 V DC.
Nominal Output	: 2 mV/V $\pm$ 0.25 %.
Non Linearity	: $\pm$ 0.50% FSO.
Hysteresis	: $\pm$ 0.50% FSO.
Non-Repeatability	: $\pm$ 0.1% FSO..
Creep (30 minutes)	: $\pm$ 0.1% FSO.
Zero Balance	: $\pm$ 2.0% FSO.
Input Resistance	: 350 $\pm$ 10 Ohms.
Output Resistance	: 350 $\pm$ 5 Ohms.
Insulation Resistance	: 1000 M Ohms.
Temp. Comp. Range	: 0°C to 50°C.
Temp. Effect on Output	: 0.005% FSO/°C.
Temp. Effect on Zero	: 0.005% FSO/°C.
Safe Overload	: 150% FSO.
Ultimate Overload	: 200% FSO.

**DIMENSIONS :**

**Office** : F # 1, Paradise Apartments, No. 11, 1<sup>st</sup> Floor, 5<sup>th</sup> Cross, Prashanthnagar, Bangalore - 560 079.  
Ph : 080 - 2348 1364, 6576 1259. Fax : 080 - 2328 3728. E-mail : sales@epochloadcell.com.

**Factory** : No. 16, Bhadrappa Estate, 54, Magadi Main Road, Kamakshipalya, Bangalore - 560 079.  
Ph : 080 - 2328 7998. E-mail : epochinstruments@yahoo.com, Web : www.epochloadcell.com.